

**MATT
HOLMES**

**PORTFOLIO
OF WORK**



ABOUT

Matt is a narrative-driven Designer Maker, working in both contemporary and traditional making processes.

An explorative problem solver with a good sense of humour and play, Matt utilises hands-on practice combined with emerging digital technologies (such as 3D Printing) to create engaging outcomes.

Current projects include investigating how modern techniques can work to enhance and evolve traditional craft practices.

Matt will be graduating from The University of Plymouth in 2020 with a BA Hons in 3D Design: Designer Maker.



CONTACT

EMAIL - MATT@HOLMESYLOGIC.CO.UK

WEB - WWW.HOLMESYLOGIC.CO.UK



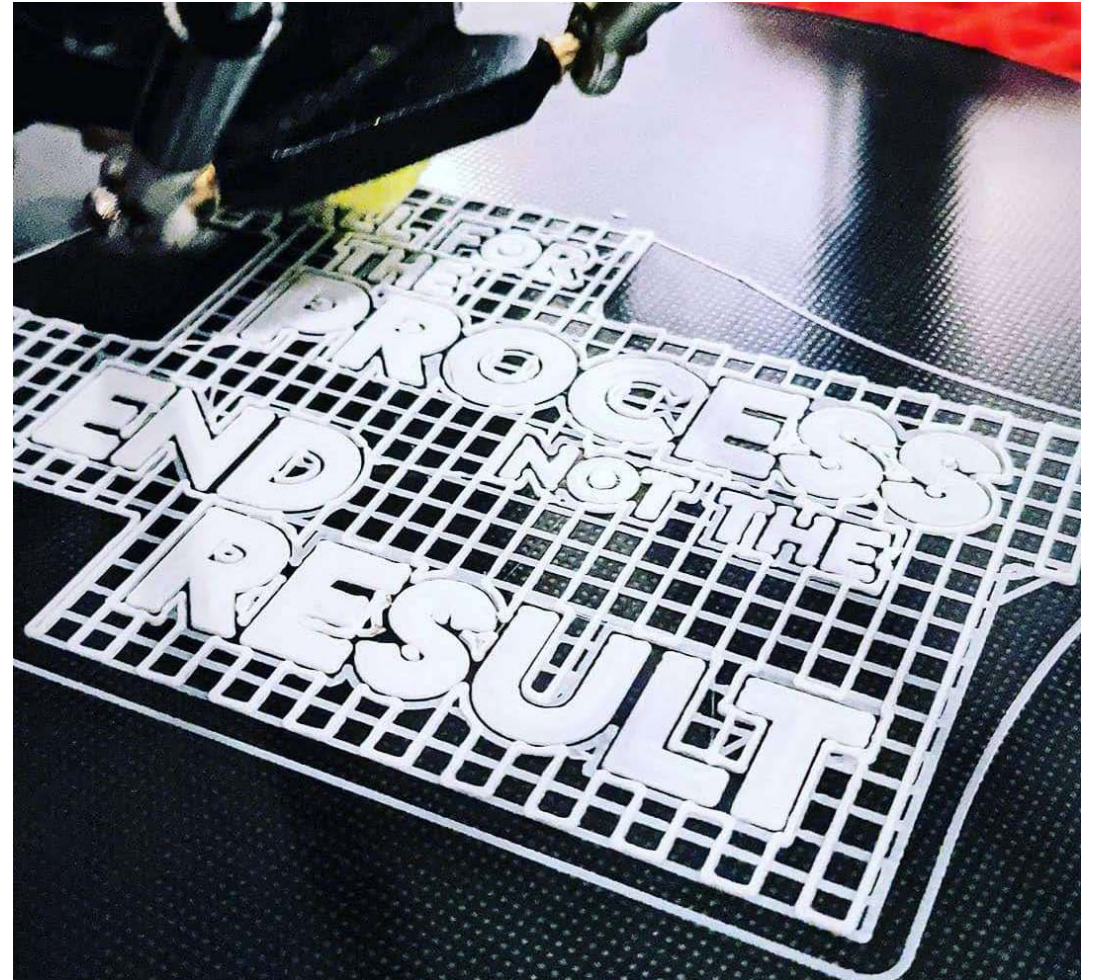
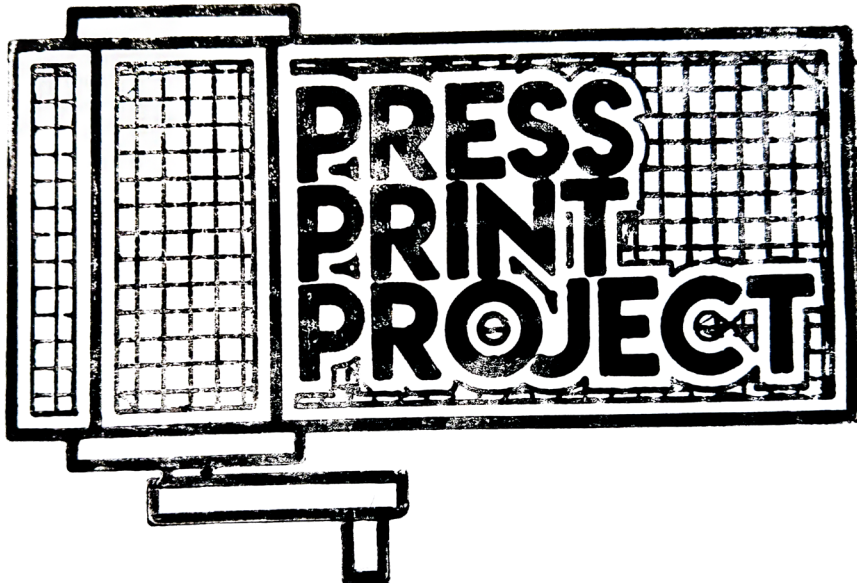
[@HOLMESYLOGIC](https://www.instagram.com/HOLMESYLOGIC)



[/HOLMESYLOGIC](https://www.facebook.com/HOLMESYLOGIC)



[/MATT-HOLMES-HOLMESYLOGIC](https://www.linkedin.com/company/MATT-HOLMES-HOLMESYLOGIC)



CURRENT PROJECT

For my final major project, my aim is to utilise digital fabrication and distributed design techniques to preserve and evolve the traditional craft of letterpress.

By building on my earlier work with the typefaces, the goal is to create accessible tools to facilitate the re-democratisation of a heritage skill.

Through application of this hybrid press, I am hoping to make use of the COVID-19 situation to explore the physicality of communication print may have to offer once more - through the digital back to the analogue.





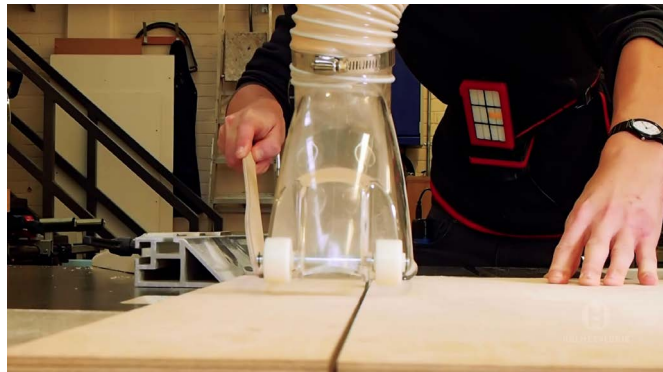
SAWDUST

“Sawdust” is a creative response to a one-word brief of Waste.

To highlight the danger of hazardous sawdust waste in the air while woodworking, I designed and created a wearable air filter that I kept on my person while in the workshop as I created a set of plywood tables.

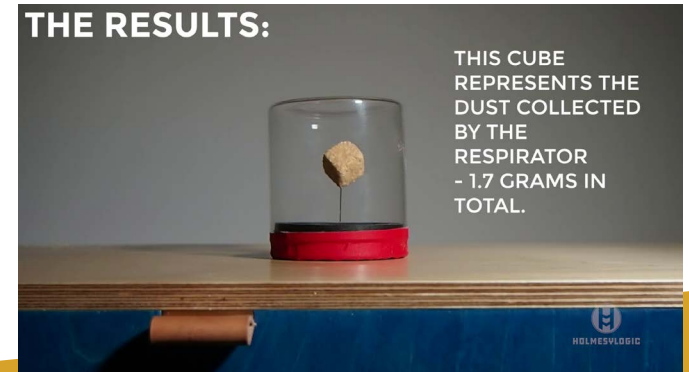
The resulting cube of dust was presented to highlight the dust in the air that could have been inhaled, and as a warning to wear appropriate PPE.

See the full film on my YouTube Channel:
www.youtube.com/holmesylogic



THE RESULTS:

THIS CUBE
REPRESENTS THE
DUST COLLECTED
BY THE
RESPIRATOR
- 1.7 GRAMS IN
TOTAL.



THINKPRINTED



The ThinkPRINTED collection was inspired by the desire to create value from 3D printed objects in the household.

By combining a 3D printed outer shell with a Jesmonite core, strength and value could be added with a simple production procedure. The 3D print acts as mould and final surface in one, drastically reducing finishing time and also resulting in far less waste.

The collection is still active, and I hope to expand the product range to include larger pieces such as lighting.



The ThinkPRINTED Collection

Designed and Made by **HolmesyLogic Creative**





HULL

Created in one motion, the HULL pendant lamp is steam bent from Ash to form a profile inspired by the lines of a ships hull.

Designed for communal areas and over-counter displays, the curves and warmth of the timber create a gentle spotlight on the surfaces below.

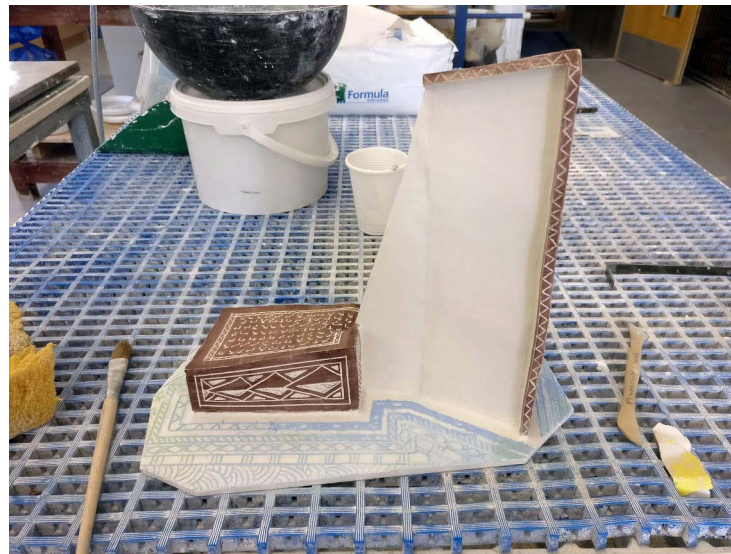


CERAMICS



Experimental work in a different medium undertaken during a short module, with the brief of “Personal Mapping”.

Iconography inspired by Polynesian tattoo symbols, the artefact acts as a physical way marker - with road directions from my University to Home encoded into the graphics.





REFLECT

This bench was created to respond to a brief of three words: Mirror, Reflect, and Slot.

The bench consists of one chair, visualised through two reflection lines to create an interconnected bench, constructed from Ash with traditional mortice and tenon joinery.





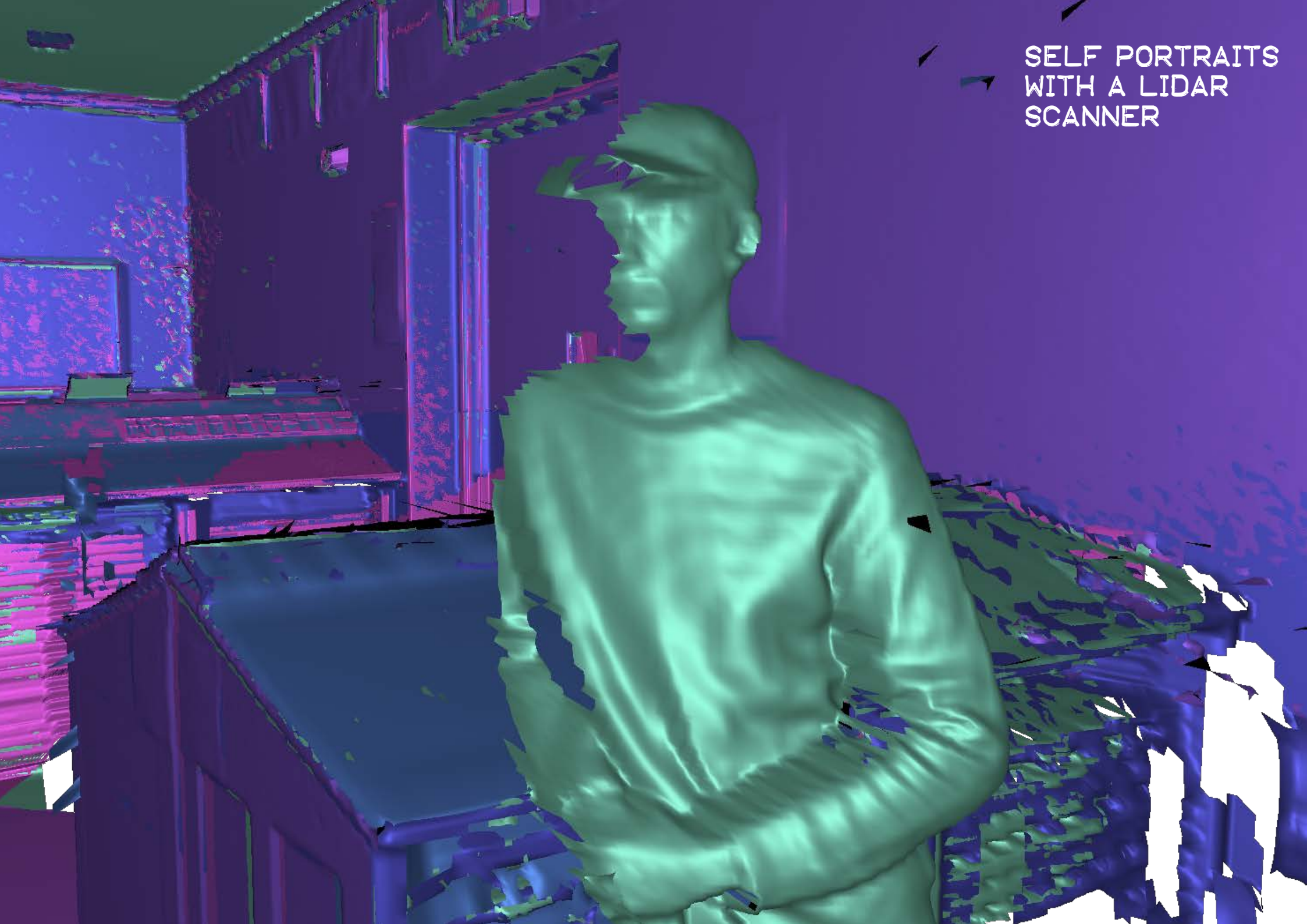


LOOP

A spiralling mesh of simple steam-bent oak loops, this chandelier lighting was designed to create dramatic contrasts through the play of the light and shadow across the timber.

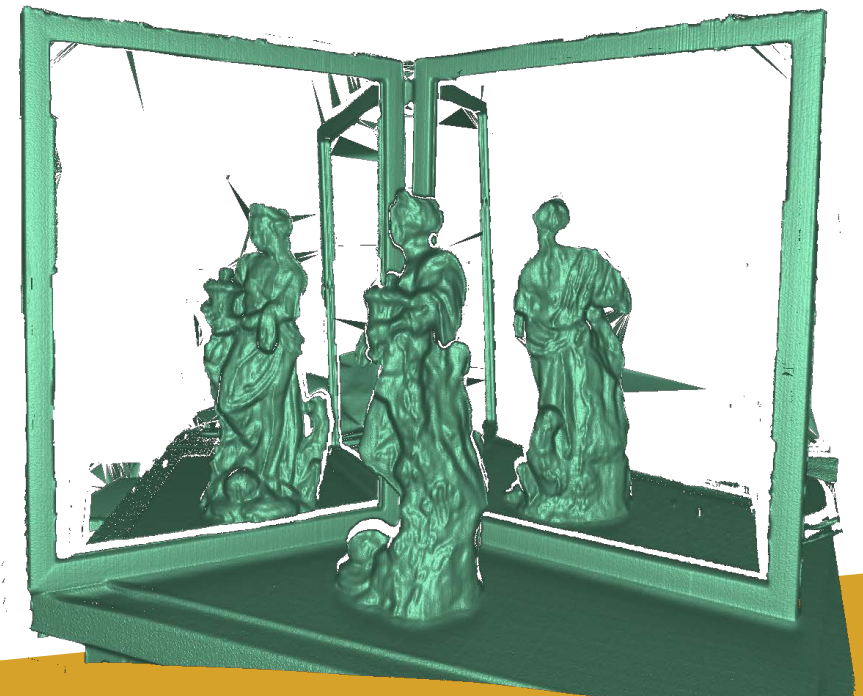


SELF PORTRAITS
WITH A LIDAR
SCANNER



3D SCANNING

I have recently been experimenting with the possibilities created by 3D scanning. Tests in full building scans have revealed ways to “steal” textures, potentially for digital fabrication. Other experiments include pushing the scanners capabilities to render the real, by introducing mirrors to create “false positives” in the model creation.





SABRE

These simple steam-bent coat hooks were an experiment with how functionality can be added through both simple cuts, curves, and addition of complimentary materials.

The hook has three sections - a large hook for a hat, a loop for a scarf/gloves, and a round dowel hook with leather grip for a coat.



FROM THE HELLBOX

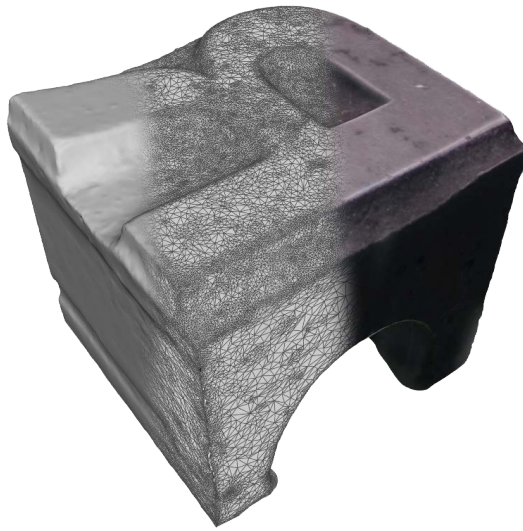
Based on a theme of “repair”, the aim for this project was to see how digital technologies could be used sympathetically to protect and preserve a letterpress typeface.

Several approaches were taken to the repair - 3D Scanning via photogrammetry was used to capture a damaged, potentially unique typeface. This data allowed digital reconstructions to be made, 3D printed and re-cast in cold-cast iron powder resin. Alongside, investigations were made to creating “repair plates”, 3D printed from the gaps in the scanned print to re-fill the damaged areas.

To document this, a handmade book was created to document the process, complete with USB containing the preserved font data.

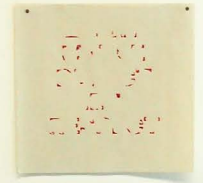
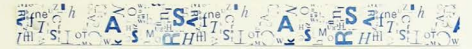
I see this project as the genesis point for my fascination with combining digital technologies with heritage crafts, and the exploration of what it means for authenticity in the digital age.





BROKEN?

EVERY LITTLE DEFECT GETS RESPECT	EVERY LITTLE DEFECT GETS RESPECT	EVERY LITTLE DEFECT GETS RESPECT
EVERY LITTLE DEFECT GETS RESPECT	EVERY LITTLE DEFECT GETS RESPECT	EVERY LITTLE DEFECT GETS RESPECT



EVERY +
LITTLE
DEFECT
GETS
RESPECT



EVERY
LITTLE
DEFECT
GETS
RESPECT

REPAIRED





MAJOR PROJECT

HOLMESYLOGIC

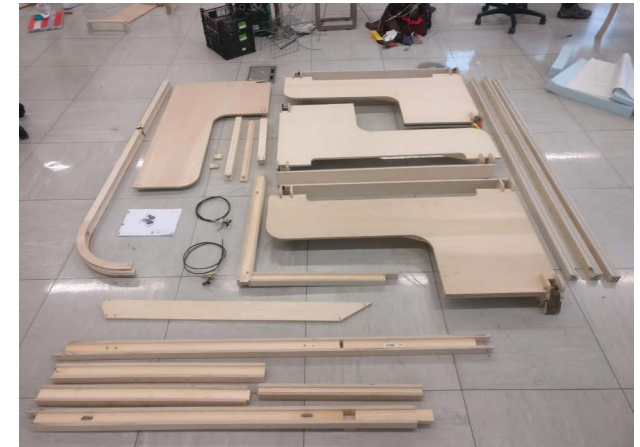
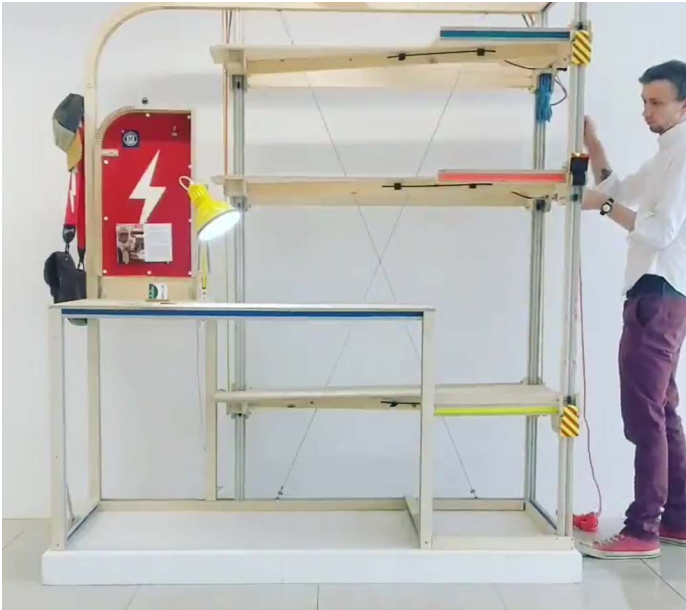
MAJOR PROJECT
PLA Ration
MM

MAKE MAKE MAKE
DESIGNER MAKER ARTIST
HOLMESYLOGIC

THINKPRINTED



MAKERDESK



The MakerDesk came to be after researching the working practices of the Japanese anime director Hayao Miyazaki of Studio Ghibli.

The desk has multiple levels, which through a system of rails and pulleys can be interchanged to be brought to the main working area. This allows each workspace to exist separately, and be moved to without having to tidy away one to start on another - maximising flow.

This desk became the studio workspace for my final year at university, and transcended a simple workstation into becoming my creative hub, often associated with my character and an extension of my personality.

DISSERTATION

I decided for my undergraduate dissertation to enhance my conceptual and critical thinking skills by opting to work towards an extended word count than the standard for my course. As a maker who enjoys the practicality of making, this was a difficult decision to make, however I felt this was an opportunity to really extend my research skills and cultural understanding of design.

My work focussed on the changing nature of authenticity in crafts at the crossover point where traditional and digital making practices collide. The catastrophic fire at Notre Dame in April 2019 was used as a vehicle to explore different digital techniques being employed in a heritage setting, and how these may affect the very nature of the building, and by extension the craft underpinning it.

Key theorists such as Malcolm McCullough, Howard Risatti and David Pye were crucial reading to inform my work, and have come to also influence my personal maker philosophy as a result.

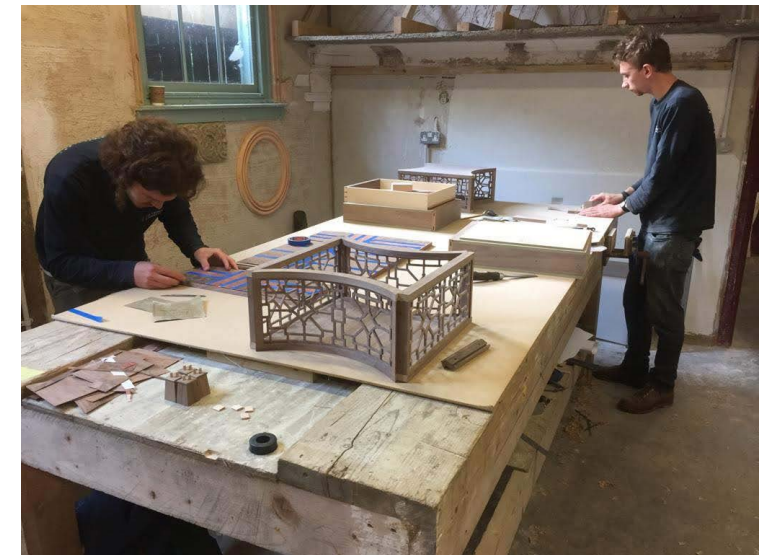
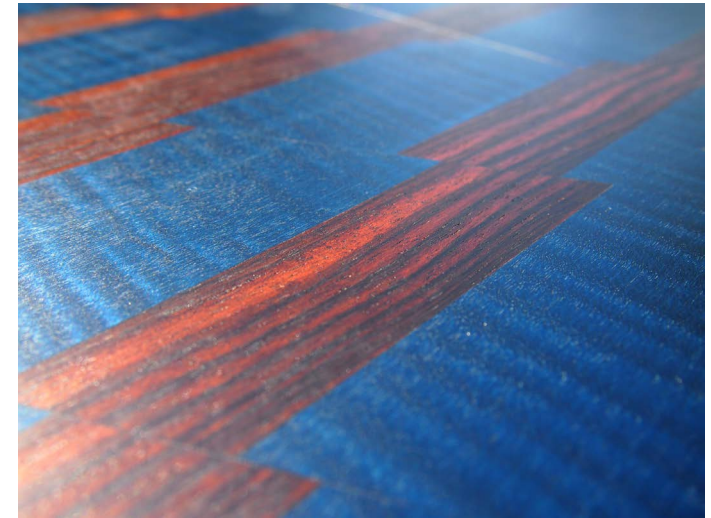
To reinforce the digital/analogue hybrid nature of my writing, I chose to hand bind the physical submission copy of the dissertation.



SNOWDON

July 2019, I was selected as one of eight students for the week-long Snowdon Summer School, an enterprise of David Linley (Lord Snowdon), hosted at Dumfries House, Scotland.

I worked under the expert tuition of William Warren, Jonathan Rose and Naseer Yasna (Mansouri). Throughout the week we were tasked with creating a marquetry side table based upon the Breakfast Table, part of the Dumfries Chippendale collection.





IN THE MEDIA



Article - "A Marvelous Mix"

A short write-up of the construction of my large walkman coffee table.

Make: Magazine Vol. 61
Feb/Mar 2018 p13.



Article Interview - "Snowdon Summer School"

Comments on my experiences during the week-long summer school.

The Princes Foundation Journal, September 2019.

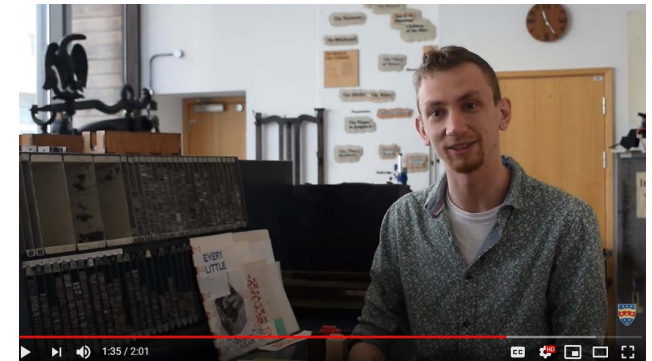
<https://princes-foundation.org/snowdon-summer-school>



Video Interview - "Creating a Japanese Workbench"

Discussing the joys of working by hand with natural materials.

University of Plymouth, YouTube. 2019.



Video Interview - "Using modern materials to preserve letterpress"

Discussing the importance of preservation skill, but also that technology should not be feared.

University of Plymouth, YouTube. 2019.

